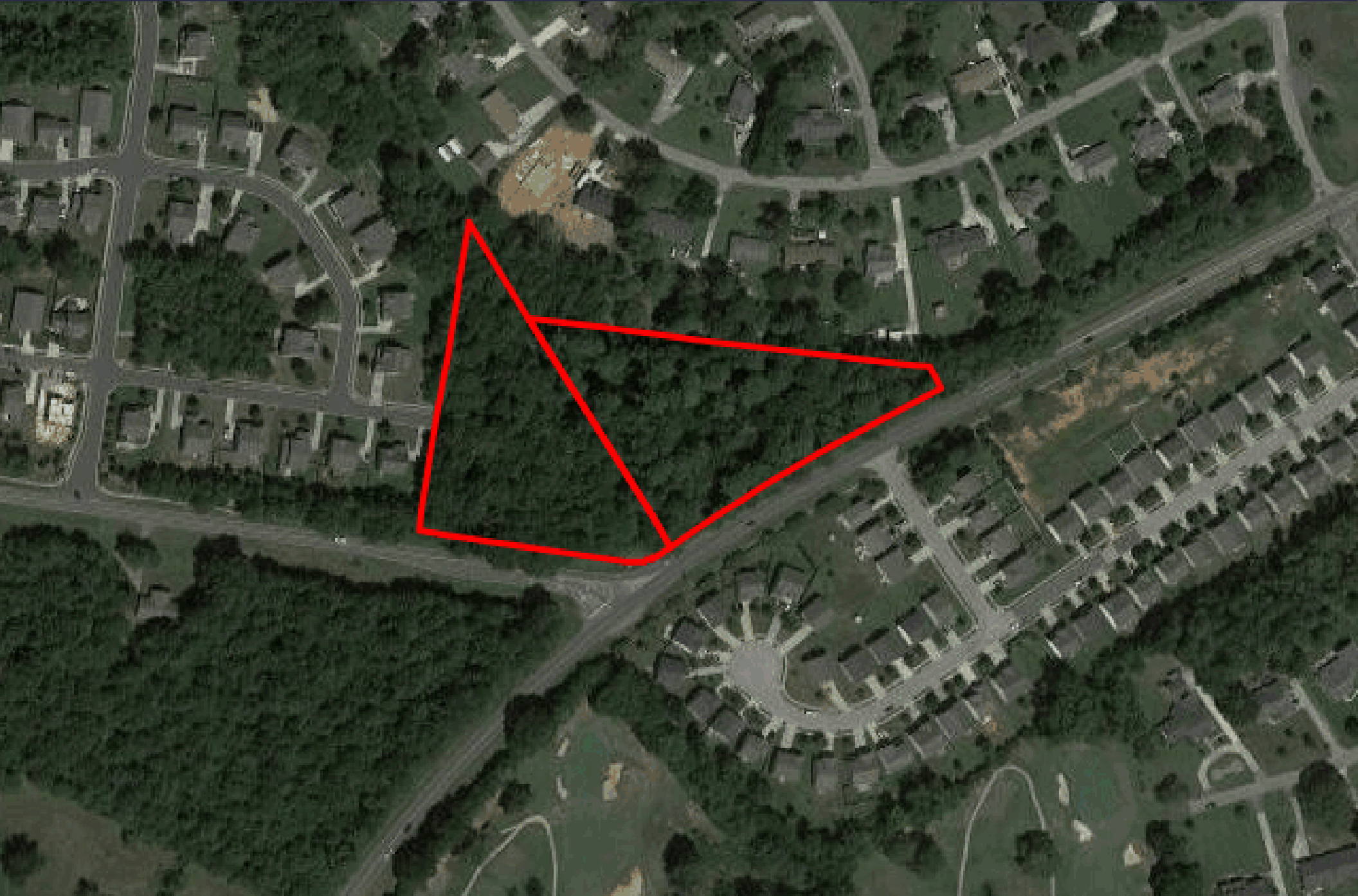


±4.56 Acres of Land | **FOR SALE**
767 Rawlsville Road | Rock Hill, SC | 29730





Wooded lots adjacent to nice subdivision.
Location has excellent access to Mt. Holly Road and I-77. Location is only minutes to downtown Rock Hill. High traffic volume for retail or office. Also perfect for Medical and Daycare.

PROPERTY STATUS	For Sale
ACREAGE	± 4.56 ACRES (both parcels)
ZONING	Residential
SALE PRICE	\$500,000



Photo of land boundary.



Downtown Rock Hill

E Main St, Rock Hill, SC 29730

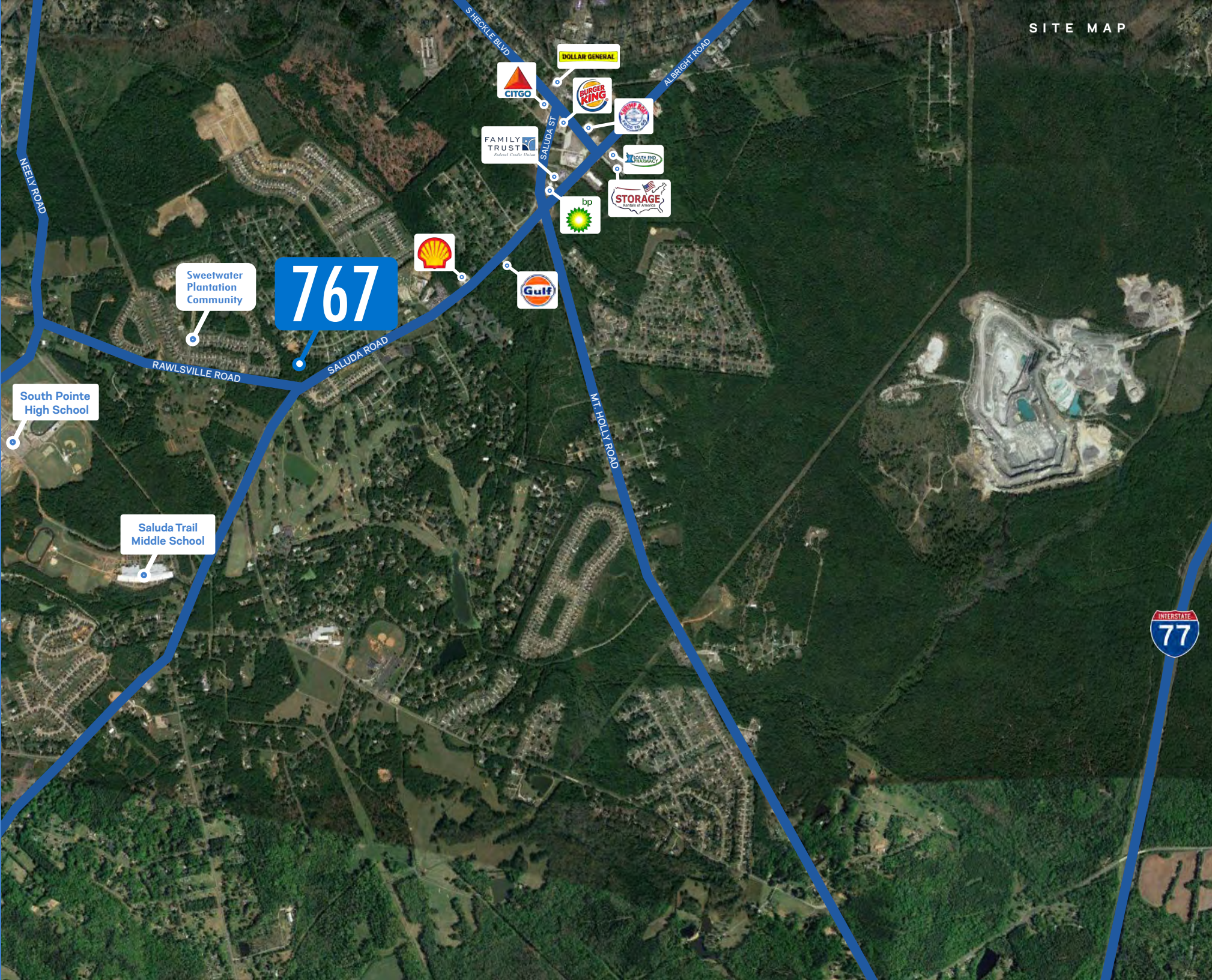
Rock Hill Downtown Historic District consists of twelve contiguous buildings built between 1870 and 1931 in downtown Rock Hill in York County, South Carolina. (Wikipedia)



Rock Hill Country Club

600 Country Club Drive, Rock Hill, SC 29730

Rock Hill Country Club is one of the premier clubs in the upstate of South Carolina. Founded in 1934, RHCC is steeped in tradition and has served an important role in the history of Rock Hill through the years. Since its beginning, the Club has played host to visiting dignitaries, prestigious golf tournaments, PGA Touring Pros and national celebrities. (RockHillCountryClub.net)



767

Sweetwater Plantation Community

South Pointe High School

Saluda Trail Middle School



DOLLAR GENERAL



FAMILY TRUST
Federal Credit Union



STORAGE
UNITED STATES OF AMERICA



NEELY ROAD

RAWLSVILLE ROAD

SALUDA ROAD

SHECKLE BLVD

SALUDA ST

ALBRIGHT ROAD

MT. DOLLY ROAD

INTERSTATE
77



Population

1 MILE RADIUS	1,595 people
3 MILE RADIUS	18,731 people
5 MILE RADIUS	46,901 people



Households

1 MILE RADIUS	2,014 households
3 MILE RADIUS	12,337 households
5 MILE RADIUS	30,454 households



Average Household Income

1 MILE RADIUS	\$51,974
3 MILE RADIUS	\$42,664
5 MILE RADIUS	\$49,781



Workforce Density

1 MILE RADIUS	733 employees
3 MILE RADIUS	8,401 employees
5 MILE RADIUS	21,130 employee



Traffic Volume

10,600 vehicles per day



Downtown Rock Hill



767

RAWLSVILLE ROAD

For more information on lease opportunities and to schedule a tour, please contact:

Hershel Fogleman

(704) 617-1654

hfogelman@boundarystreetadvisors.com

John Smethurst

(704) 650-5082

jsmethurst@boundarystreetadvisors.com

